

2006 Annual Report



Oconto County Department of
Health and Human Services



Department of Health and Human Services

.....promoting healthy and responsible families

501 Park Avenue

920-834-7000

Dear Health and Human Services Board Members:

Another year has come and gone, and upon further review, 2006 was not that much different from the recent past. Inpatient stays and out-of-home placements for children continue to be the issues that drive our budget. As in other years, we provided services to individuals and families in an attempt to prevent such placements. Fortunately, it often works, but not always.

As always, there are new issues and other items of interest that are incorporated into this booklet, but I believe the near future will bring more changes than normal. The same fiscal pressures we feel are felt nation-wide and are often the catalyst for change, but we will just have to wait and see what occurs and what ends up in future issues of this report.

You will see in this report the growth in the number of people served and units of service provided continued. What you may not see is how our local culture is changing. People are more sophisticated and demanding. There are many more providers with whom we need to communicate and coordinate. Our minority population is increasing. Unfortunately, it gets more difficult every year for the system to support the numbers and diversity, however, we have many dedicated employees that keep the process moving.

Thank you for your support,

Craig Johnson, Director
Oconto County Health and Human Services Director

TABLE OF CONTENTS

| | <u>Page</u> |
|--|-------------|
| ADMINISTRATION | |
| Board of Directors/Committees | 1 |
| Program Organizational Chart | 2 |
| Financial Summary | 3 |
| PUBLIC HEALTH DIVISION | |
| Organizational Chart | 4 |
| Financial Summary | 5 |
| Program Activity Graphs | 6-8 |
| Division Summary | 9 |
| ECONOMIC SUPPORT DIVISION | |
| Organizational Chart | 10-11 |
| Financial Summary | 12 |
| Program Highlights | 13-16 |
| Division Summary | 17 |
| FAMILY SERVICES DIVISION | |
| Organizational Chart | 18 |
| Financial Summary | 19 |
| Program Activity Graphs | 20-22 |
| Division Summary | 23 |
| COMMUNITY SERVICES DIVISION | |
| Organizational Chart | 24 |
| Financial Summary | 25-26 |
| Program Activity Graph | 27 |
| Program Activity Table | 28 |
| Division Summary | 29 |
| VOCATIONAL SERVICES DIVISION | |
| Organizational Chart | 30 |
| Financial Summary | 31 |
| Program Activity Graph | 32 |
| Division Summary | 33 |
| ADMINISTRATIVE SUPPORT DIVISION | |
| Organizational Chart | 34 |
| Financial Summary | 35 |

VISION

Our Vision is to provide or arrange social, financial, medical and emotional support to the people of Oconto County.

Individuals and families will be treated with respect and dignity, and ensured the right to privacy.

MISSION

Oconto County Department of Health and Human Services
...promoting healthy and responsible families.

OCONTO COUNTY DEPARTMENT OF HEALTH AND HUMAN SERVICES

BOARD OF DIRECTORS AND COMMITTEES 2007

Lois Trever, Chair
P.O. Box 225
Mountain, WI 54149

Claire Trepanier
139 Messenger Avenue
Oconto, WI 54153

James E. Schroeder
10357 Hwy 22 & 32
Gillett, WI 54154

Loretta Shellman, Vice Chair
P.O. Box 128
Oconto Falls, WI 54154

Gerald Beekman
1206 Park Avenue
Oconto, WI 54153

Marie Bartz
3009 Chandler Street
Abrams, WI 54101

Kathy Gohr
8811 Gohr Road
Krakow, WI 54137

Carolyn Barke
6048 Highway 32
Gillett, WI 54124

Barb Smith
146 Wallis Street
Gillett, WI 54124

LONG TERM SUPPORT COMMITTEE

Marie Bartz—Alternate
Gerald Beekman
Michele Braski
Ruth Carriveau
Sue Cota
Kathy Gohr
William Greasby
Jon Hanchett
Debra Konitzer
Doug Kurek
Mike Reimer
Alane Roberts
James Schroeder—Alternate
Oliver Shallow Jr.
Barb Smith
Claire Trepanier
Lois Trever

FAMILY SUPPORT ADVISORY COMMITTEE

Lynette Bodoh
Kim Boucher
James Collins
Dawn Coors
Tana Galbreath
Claire Janssen
Debra Konitzer
Jane Nowak
Michele Olson
Robin Peters
Tami Tipler
Jacquelyn Walske
Lori Zuber

CLIENT RIGHTS COMMITTEE

Marie Bartz
Gerald Beekman
Kathy Gohr
James Schroeder

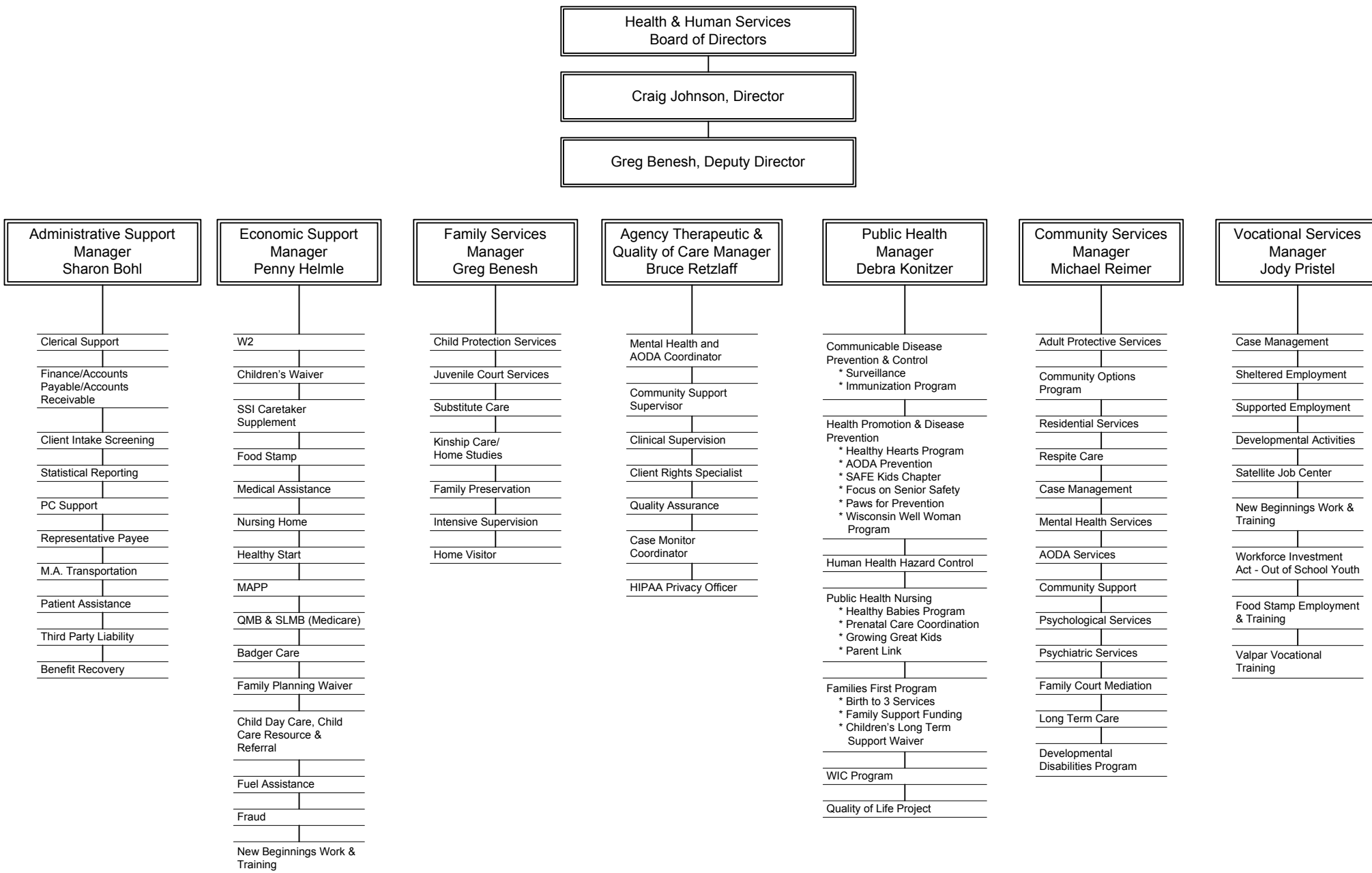
W2 COMMUNITY STEERING COMMITTEE

Carolyn Barke
Gerald Beekman
Kathy Gohr
Penny Helmle
Craig Johnson
Loretta Shellman
Barb Smith
Claire Trepanier
Lois Trever

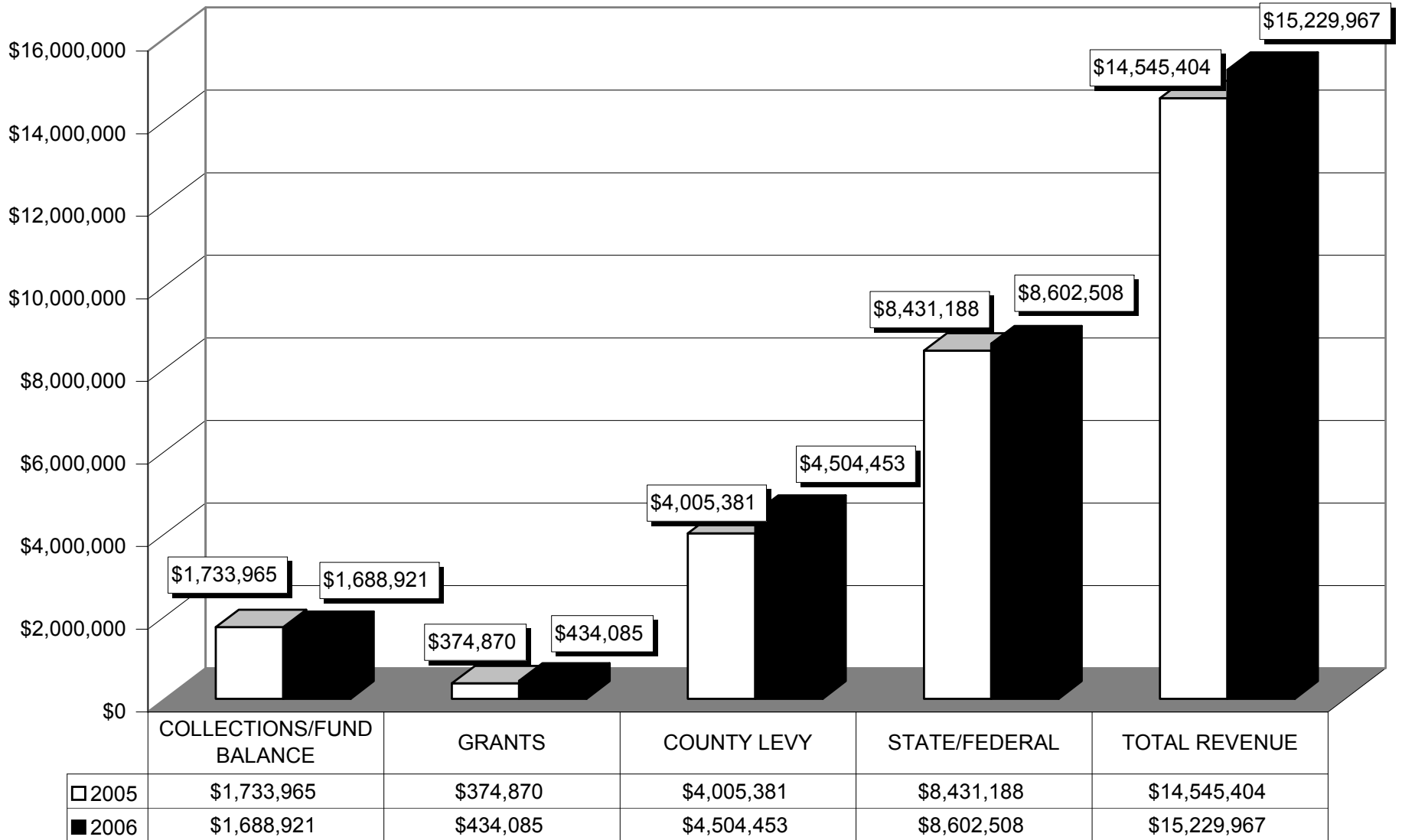
PERSONNEL COMMITTEE

Carolyn Barke
Loretta Shellman
Barb Smith

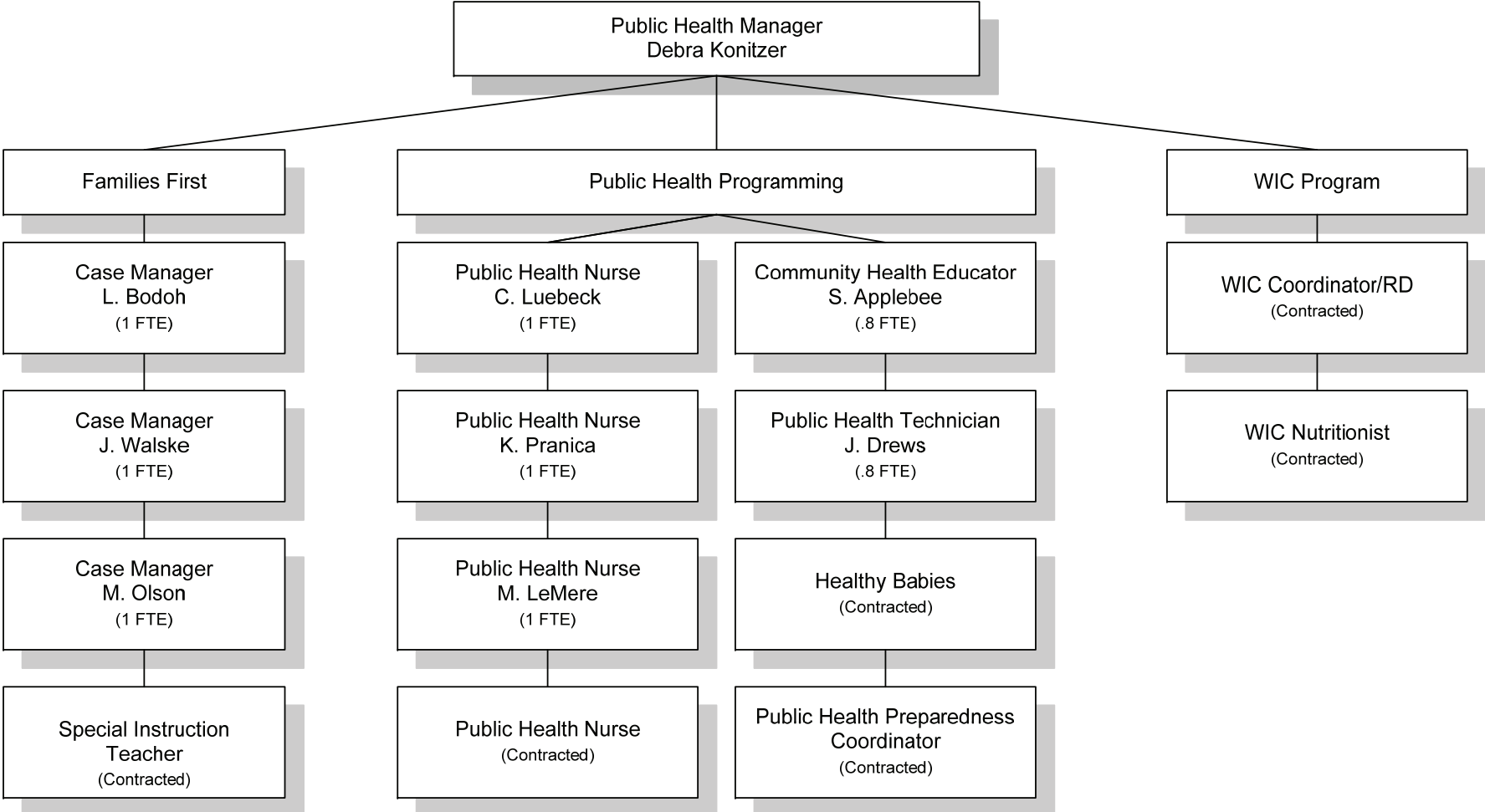
HEALTH & HUMAN SERVICES PROGRAM ORGANIZATIONAL CHART



2006 FINANCIAL SUMMARY OCONTO COUNTY DEPARTMENT OF HEALTH AND HUMAN SERVICES



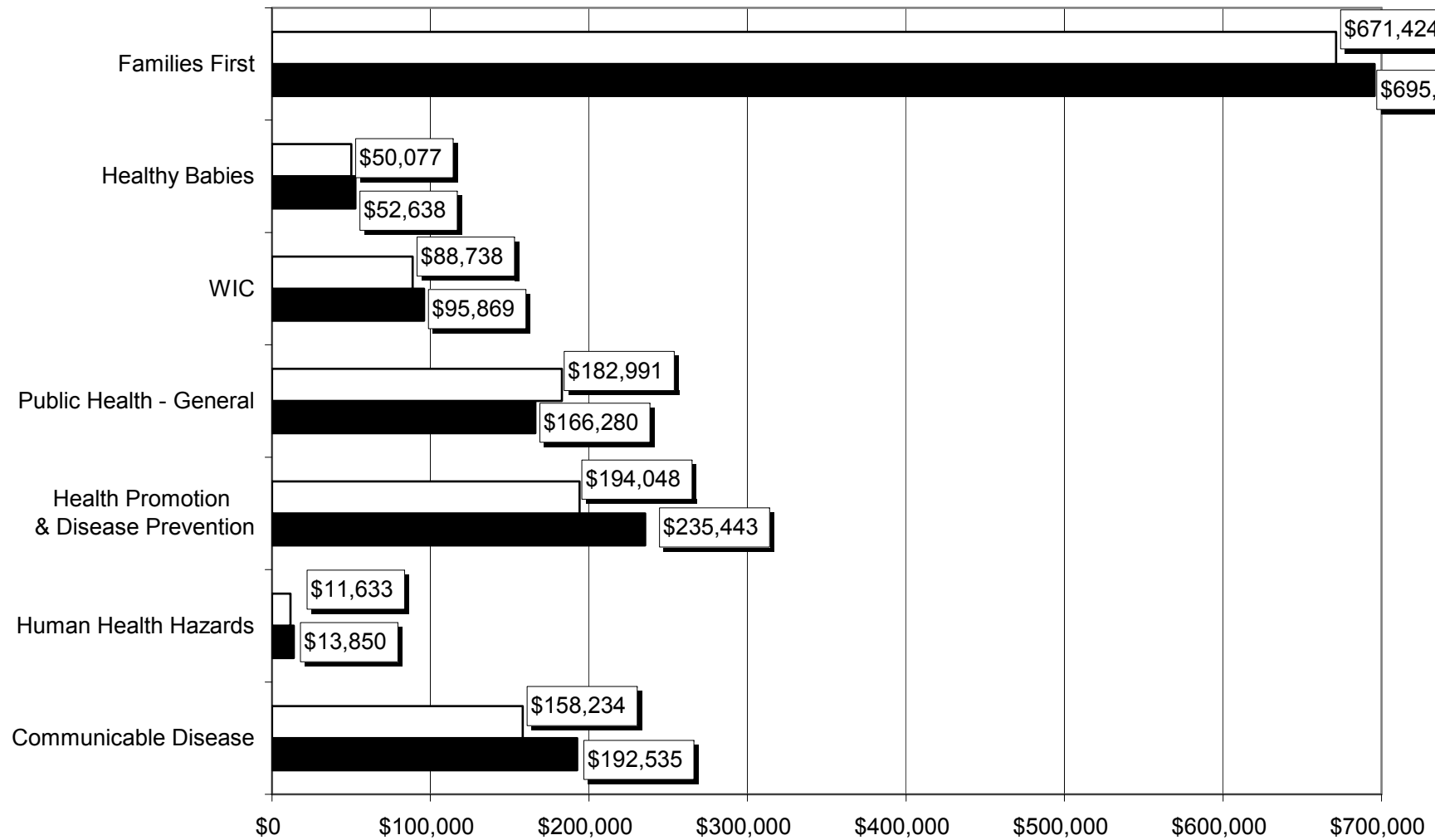
HEALTH & HUMAN SERVICES PUBLIC HEALTH



AUTHORIZED COUNTY POSITIONS: 8
 COUNTY FTE: 7.6
 CONTRACTED POSITIONS: 6

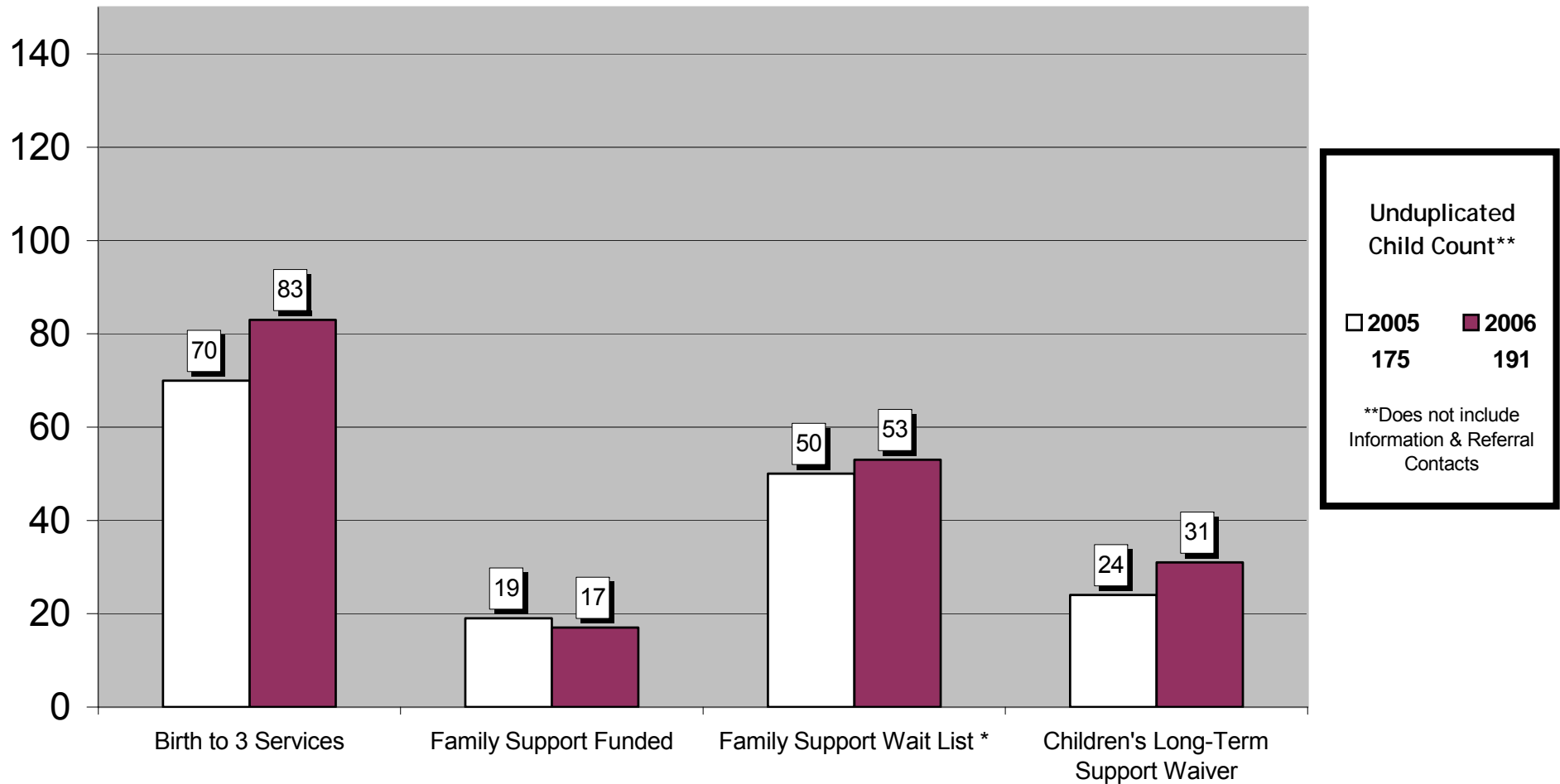
**2006 FINANCIAL SUMMARY
PUBLIC HEALTH DIVISION
TOTAL EXPENSES**

| TOTAL EXPENSES | |
|----------------|-------------|
| 2005 | 2006 |
| \$1,357,145 | \$1,452,188 |



2006 Families First Program

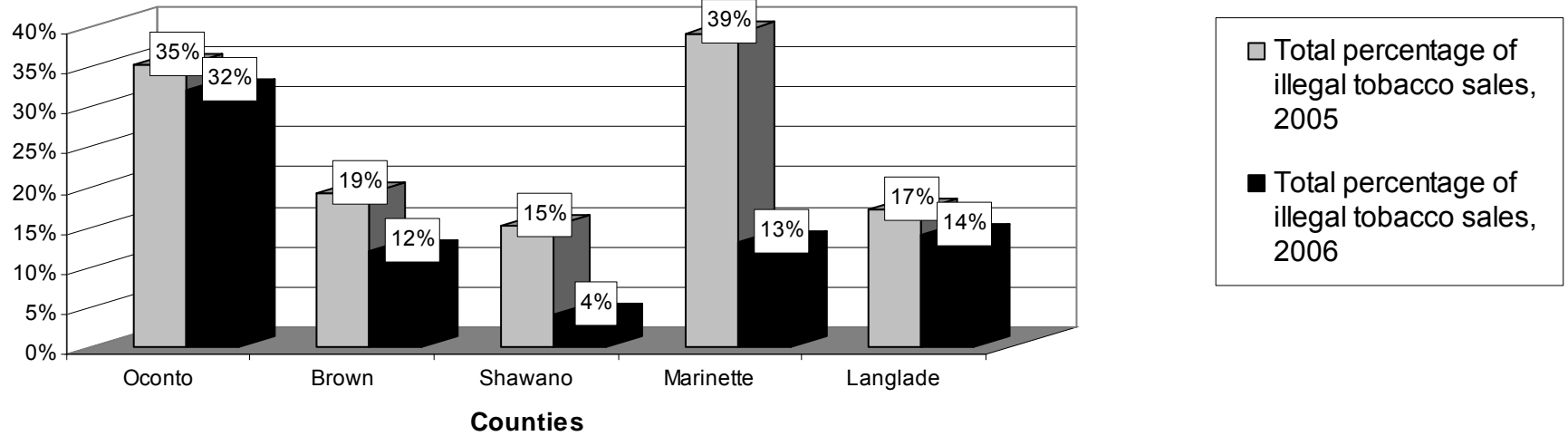
Number of Children Receiving Services



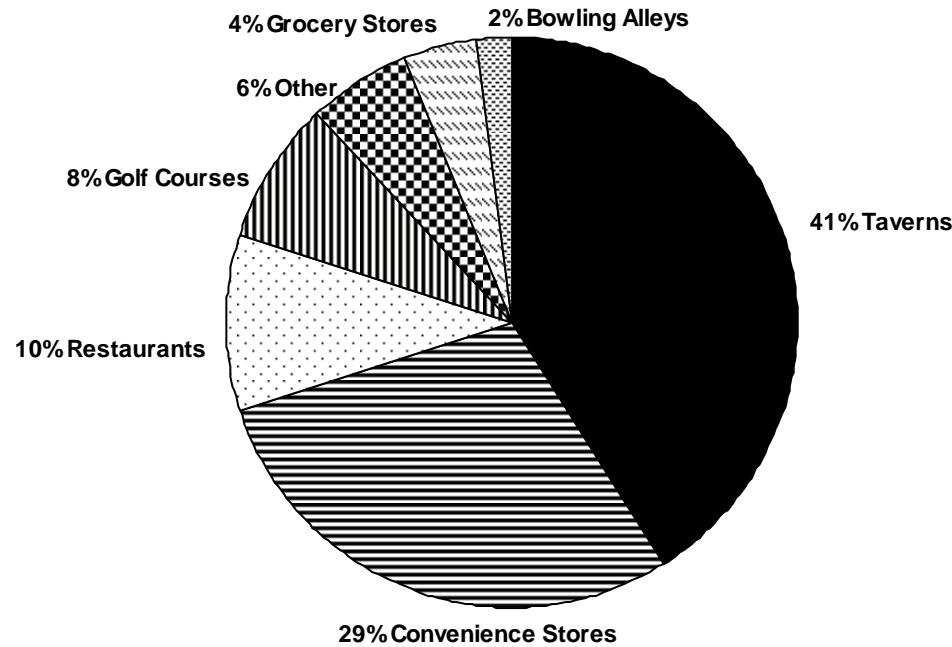
* 17 children on the Family Support Wait List received emergency or end of year funding (average amount \$783 per child)

2006 Wisconsin Wins Tobacco Vendor Compliance Check Activity

Illegal Tobacco Sales of Area Counties, 2005 vs. 2006



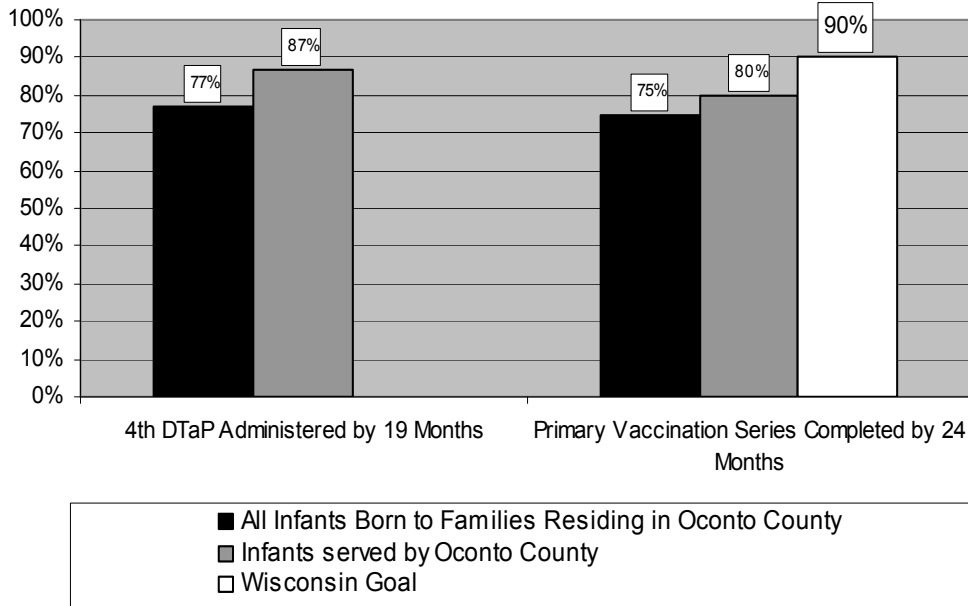
Comparison of Percentages of Illegal Tobacco Sales by Type of Vendor in Oconto County, 2006



2006

COMMUNICABLE DISEASE PREVENTION & CONTROL

PERCENTAGE OF CHILDREN MEETING IMMUNIZATION BENCHMARKS



Benchmarks have been established by the Center for Disease Control & Prevention to measure the progress towards raising the immunization levels for universally recommended vaccines in the community.

The immunization program has implemented population-based strategies to improve immunization rates around 2 benchmarks:

- Infants will have received their 4th dose of DTaP by 19 months of age.
- Infants will have received 4 DTaP, 3 Polio, 1 MMR, 3 Hib, 3 Hepatitis B and 1 varicella vaccination by 24 months of age.

Example of strategies implemented:

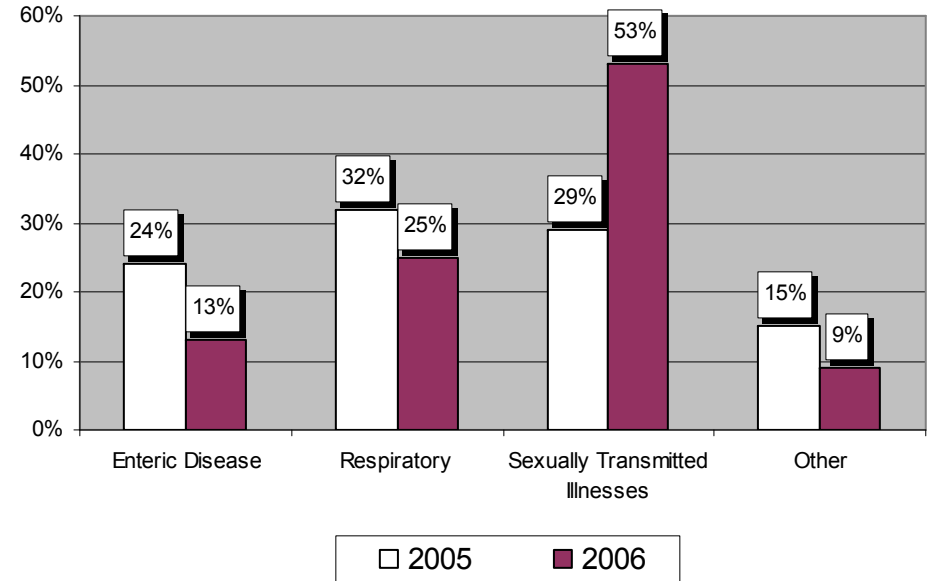
- Support to health providers & schools to utilize the Wisconsin Immunization Registry (WIR).
- Provide consultation to health providers on vaccination recommendations as the schedule complexity has increased due to the number of recommended childhood vaccines.

2000 10 vaccines recommended
2006 14 vaccines recommended

REPORTED SUSPECTED/CONFIRMED COMMUNICABLE DISEASES

TOTAL 2005 - 114

TOTAL 2006 - 105



Enteric Disease includes: *Camplobacter, Salmonella, Shigella, E.Coli, Cryptosporidium, Yersinia, and Giardia.*

Respiratory: *Blastomycosis, Pertussis, Tuberculosis, Histoplasmosis, and Mumps.*

Sexually Transmitted Illnesses include: *Gonorrhea, Chlamydia, Syphilis, and Herpes.*

Other includes: *Lymes Disease, Hepatitis C, and Mycobacterial Disease.*

2006 PUBLIC HEALTH DIVISION SUMMARY

The Women, Infant and Children (WIC) Program served an average of 576 clients per month, an increase of 27 clients per month from 2005 and 40 from 2004. Farmer's Market Nutrition Program was available again this year. Through this program, WIC participants are given \$15 in WIC checks to purchase fresh fruits, vegetables and herbs from local Farmer's Markets and farm stands. The fresh produce purchased must be grown in Wisconsin.

109 reports of human health hazards/animal bites were investigated and action taken.

Oconto County SAFE Kids Chapter activities:

- * Child Passenger Safety
 - 476 seats were inspected; 12% of the seats arrived installed correctly.
 - 271 seats were distributed to families
 - 113 boosters and 158 seats
 - 13% were free, 59% at reduced price, and 28% at regular price
 - 77 seats destroyed

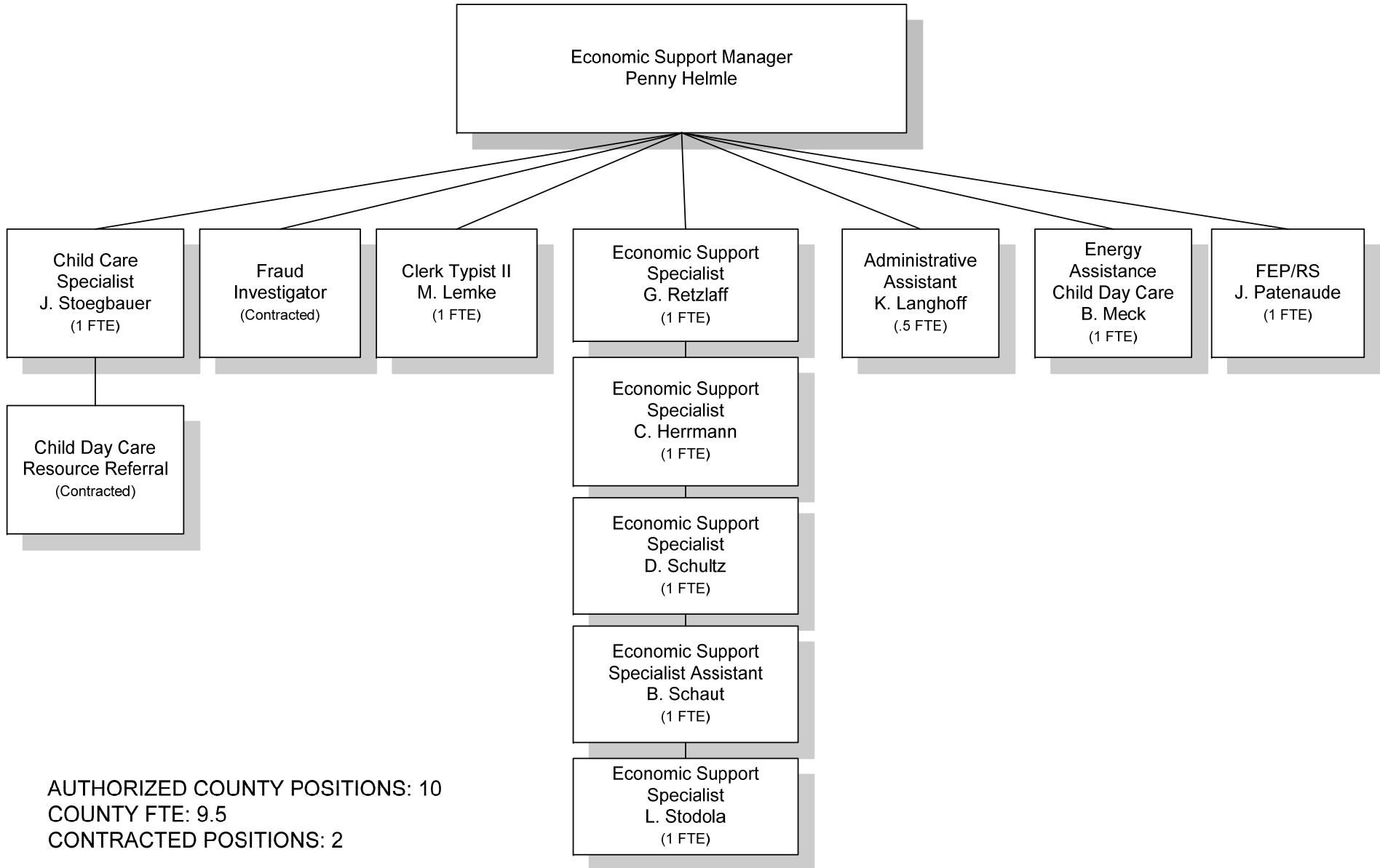
- * Delivering Fire Prevention
 - Local firefighters, food establishments, and the SAFE Kids Chapter partnered to serve 40 households (approximate 111 people) in 4 communities. They delivered:
 - pizza (on the fire engine)
 - fire prevention education
 - smoke detectors
 - 69 found working
 - 4 found not working

The Wisconsin Well Woman Program (WWWP) is a breast and cervical cancer screening program for limited income, uninsured or underinsured Wisconsin women ages 45-64. The program continued to serve 80 Oconto County women despite narrowing of the eligibility requirements and not allowing outreach by local coordinators. This number is higher than all previous years except 2005.

The Quality of Life Project continues to support and monitor several programs, including the following:

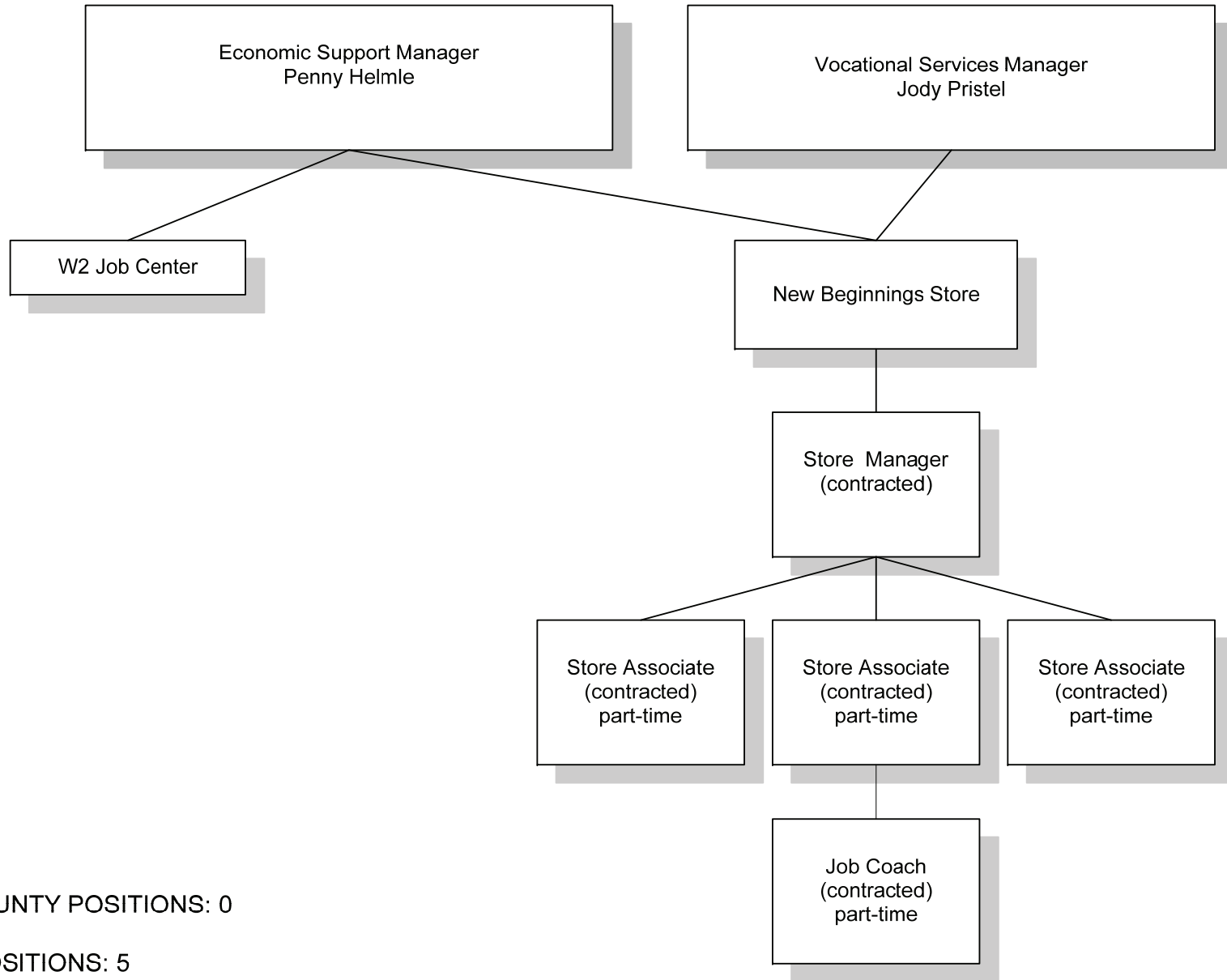
- * Healthy Babies - Oconto County
- * Mentoring Program
- * Parenting Resource Center of Oconto County
- * Oconto County Healthy Hearts Project
- * Child Welfare/Reunification Services
- * Youth Activities such as "Teen Court"
- * ParentLink

HEALTH & HUMAN SERVICES ECONOMIC SUPPORT



AUTHORIZED COUNTY POSITIONS: 10
COUNTY FTE: 9.5
CONTRACTED POSITIONS: 2

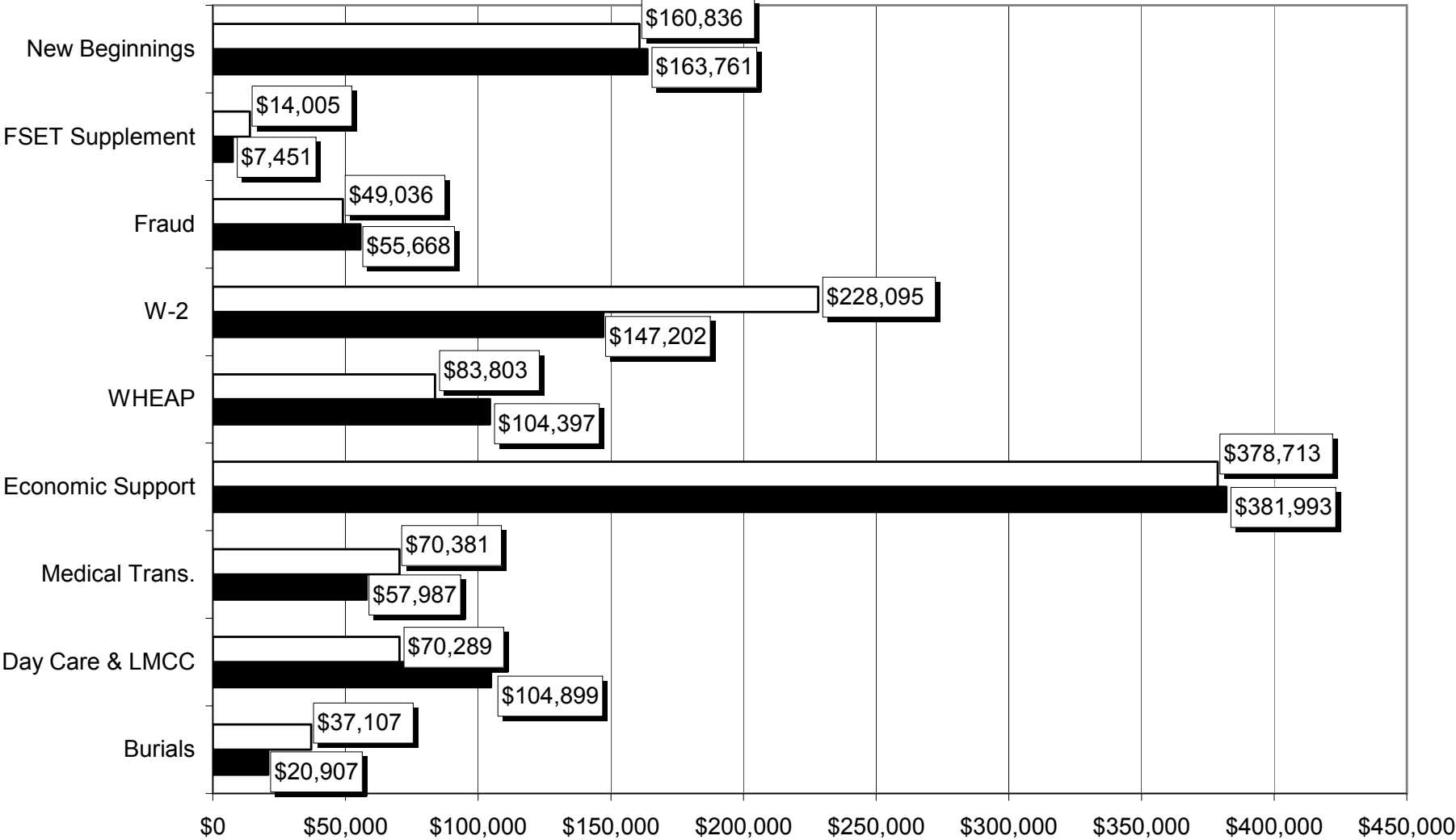
**HEALTH & HUMAN SERVICES
ECONOMIC SUPPORT
W2 JOB CENTER & NEW BEGINNINGS**



AUTHORIZED COUNTY POSITIONS: 0
COUNTY FTE: 0
CONTRACTED POSITIONS: 5

**2006 FINANCIAL SUMMARY
ECONOMIC SUPPORT DIVISION
TOTAL EXPENSES**

| TOTAL EXPENSES | |
|----------------|-------------|
| 2005 | 2006 |
| \$1,092,265 | \$1,044,265 |



WISCONSIN HOME ENERGY ASSISTANCE PROGRAM

2006

| | Count | Expenditures |
|---|-------|--------------------|
| Total Households Applied for Energy Assistance | 1,607 | |
| Total Households Paid Energy Assistance | 1,439 | \$754,404 |
| Total Households Paid LIHEAP Funded Benefits | 1,436 | \$604,511 |
| Total Households Paid Public Benefit Funded Benefits | 923 | \$149,893 |
| | | |
| Total Crisis Assistance Applications (Excluding Furnace) | 354 | |
| | | |
| Total Households Paid Crisis Assistance (Excluding Furnace) | 217 | \$138,446 |
| Total Households Paid LIHEAP Funded Crisis Applications (Excluding Furnace) | 201 | \$125,166 |
| Total Households Paid Public Benefit Funded Crisis Applications | 21 | \$13,280 |
| | | |
| Total Heating Unit Repairs Paid | 29 | \$6,890 |
| Total Heating Unit Replacements Paid | 8 | \$22,613 |
| Total Heating Unit Repairs and Replacements Paid | 37 | \$29,503 |
| Total Expenditures | | \$1,844,706 |

NEW BEGINNINGS TRAINING SERVICES

STATISTICS FOR 2006

Thirty individuals were referred for training at the store.

- * 1 individual was a youth through the WIA program
 - * This person was placed at an automotive center detailing vehicles.

- * 16 individuals were New View clients
 - * 5 have successfully completed the training and have been referred for Supported Employment
 - * 10 are continuing their training at the store
 - * 1 is employed in the community

- * 5 individuals were FSET clients
 - * 3 are in job search
 - * 2 are employed in the community

- * 8 individuals were DVR clients
 - * 7 are employed in the community
 - * 1 was closed from the program

| NEW BEGINNINGS FOOD PANTRY PARTICIPATION - 2006 | | | | |
|---|--------------|--------------|------------|--------------|
| MONTH | HOUSEHOLDS | ADULTS | CHILDREN | TOTAL |
| JANUARY | 97 | 165 | 70 | 332 |
| FEBRUARY | 90 | 161 | 71 | 322 |
| MARCH | 86 | 151 | 72 | 309 |
| APRIL | 89 | 152 | 91 | 332 |
| MAY | 86 | 149 | 76 | 311 |
| JUNE | 102 | 166 | 70 | 338 |
| JULY | 99 | 157 | 64 | 320 |
| AUGUST | 99 | 161 | 71 | 331 |
| SEPTEMBER | 82 | 140 | 70 | 292 |
| OCTOBER | 86 | 151 | 93 | 330 |
| NOVEMBER | 94 | 182 | 97 | 373 |
| DECEMBER | 71 | 128 | 63 | 262 |
| TOTAL | 1,081 | 1,863 | 908 | 2,771 |

| YTD TOTALS | HOUSEHOLDS | ADULTS | CHILDREN | TOTAL |
|---------------------|--------------|--------------|--------------|---------------|
| May 2001 - Dec 2006 | 5,259 | 8,637 | 4,044 | 12,681 |

| NEW BEGINNINGS EMERGENCY ASSISTANCE REFERRALS - 2006 | | |
|--|------------------|-----------------|
| MONTH | NUMBER OF PEOPLE | DOLLAR AMOUNT |
| JANUARY | 10 | \$62.76 |
| FEBRUARY | 3 | 23.52 |
| MARCH | 6 | 56.06 |
| APRIL | 0 | 0.00 |
| MAY | 0 | 0.00 |
| JUNE | 0 | 0.00 |
| JULY | 2 | 95.91 |
| AUGUST | 7 | 53.85 |
| SEPTEMBER | 0 | 0.00 |
| OCTOBER | 9 | 102.28 |
| NOVEMBER | 5 | 59.19 |
| DECEMBER | 5 | 98.08 |
| TOTAL | 47 | \$551.65 |

| YTD TOTALS | NUMBER OF PEOPLE | DOLLAR AMOUNT |
|---------------------|------------------|-------------------|
| May 2001 - Dec 2006 | 513 | \$6,461.63 |

2006 FRAUD STATISTICS

| | |
|--------------------------------------|----------------------------|
| 55 Medical Assistance Overpayments = | \$ 36,939.99 |
| 47 Food Stamp Overpayments = | \$ 48,470.20 |
| 10 Child Daycare Overpayments = | \$ 19,492.02 |
| 24 Energy Assistance = | \$ 6,507.25 |
| 0 W2 = | <u>\$ 0.00</u> |
| Total = | <u>\$111,409.46</u> |

- * 16 Food Stamp Error Prone Investigations
- * 5 Front End Verification (One turned into a fraud case. Two were denied initial benefits)
- * 20 cases referred for criminal prosecution
- * 12 citations issued

2006 W2/ECONOMIC SUPPORT SERVICES DIVISION SUMMARY

NEW BEGINNINGS

- * Celebrated 5 years in operation in May 2006. Sales trainings and daily reports implemented to increase sales revenues. Fundraising efforts are a continuing process.

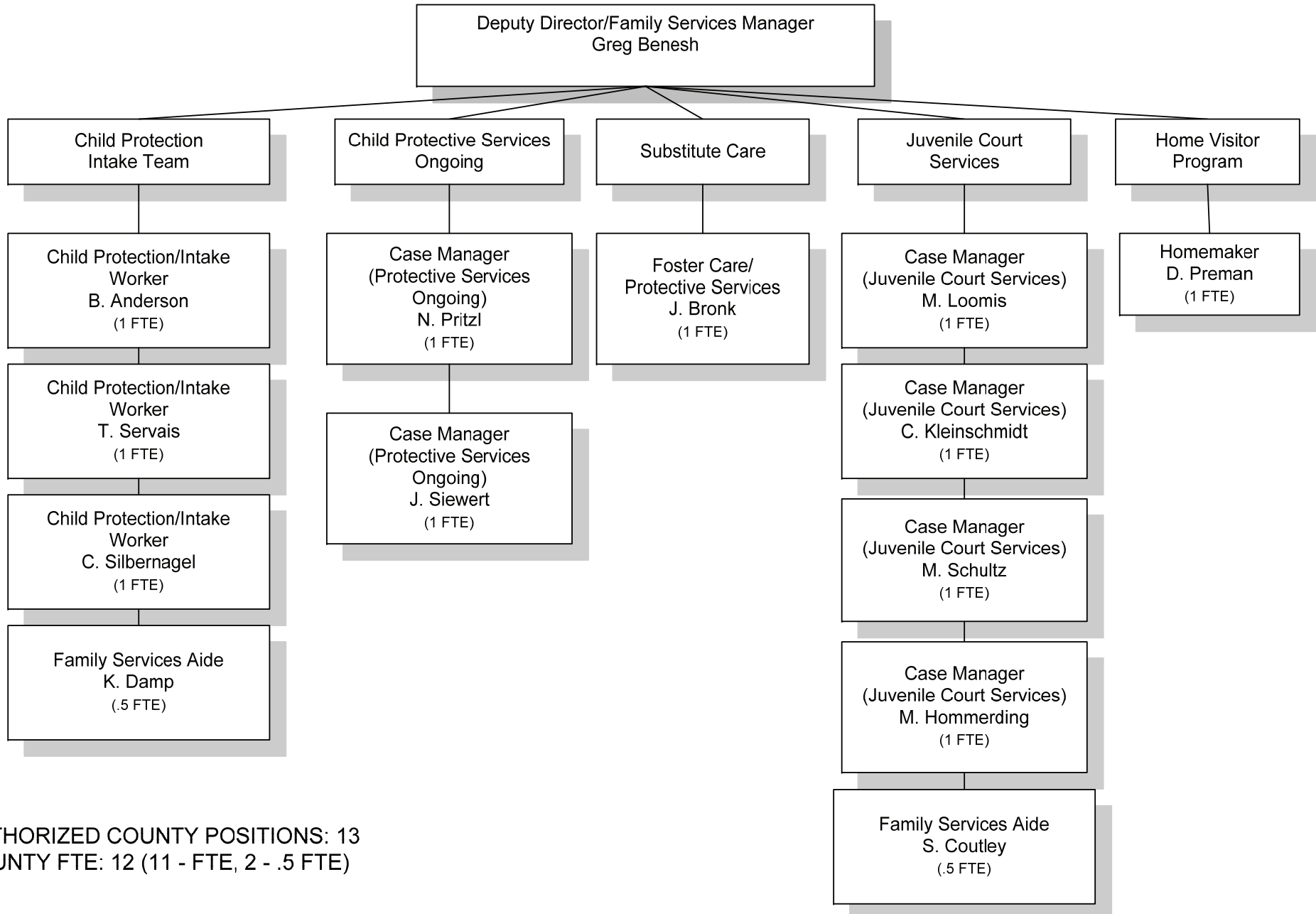
W2/FOOD STAMPS/MEDICAL ASSISTANCE/CHILD CARE

- * Assisted the COA and Community Services Division with the Medicare Part D Program.
- * In August 2006, conversion of all paper case files into a state electronic case file began. We are 75% done loading these cases. By December 2007, no paper case files will exist.

FRAUD

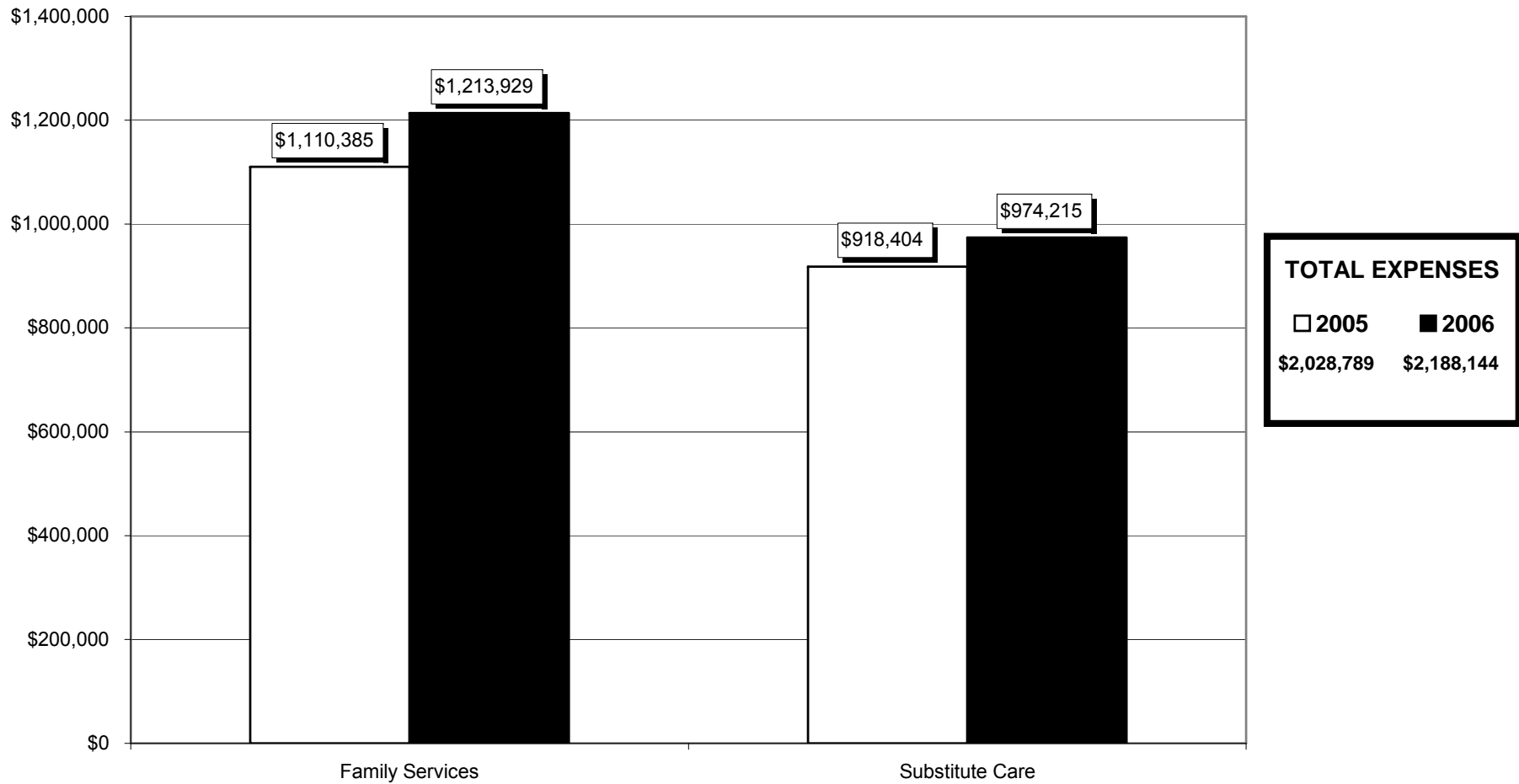
- * Billed over \$111,000 in fraud claims.
- * Kim Riefsteck, our Fraud Investigator, received the WAPF Recognition Award in 2006.

HEALTH & HUMAN SERVICES FAMILY SERVICES



AUTHORIZED COUNTY POSITIONS: 13
 COUNTY FTE: 12 (11 - FTE, 2 - .5 FTE)

2006 FINANCIAL SUMMARY
FAMILY SERVICES DIVISION
TOTAL EXPENSES



Median Length of Stay—2006

| | Median Length of Stay (months) |
|---|--------------------------------|
| Child Protective Services (CPS) Family—Oconto County | 24.5 |
| Child Protective Services (CPS) Family—State of Wisconsin | 13.8 |
| | |
| CPS Family/Juvenile Justice—Oconto County | 26.5 |
| CPS Family/Juvenile Justice—State of Wisconsin | 13.5 |
| | |
| Juvenile Justice—Oconto County | 33.9 |
| Juvenile Justice—State of Wisconsin | 8.5 |

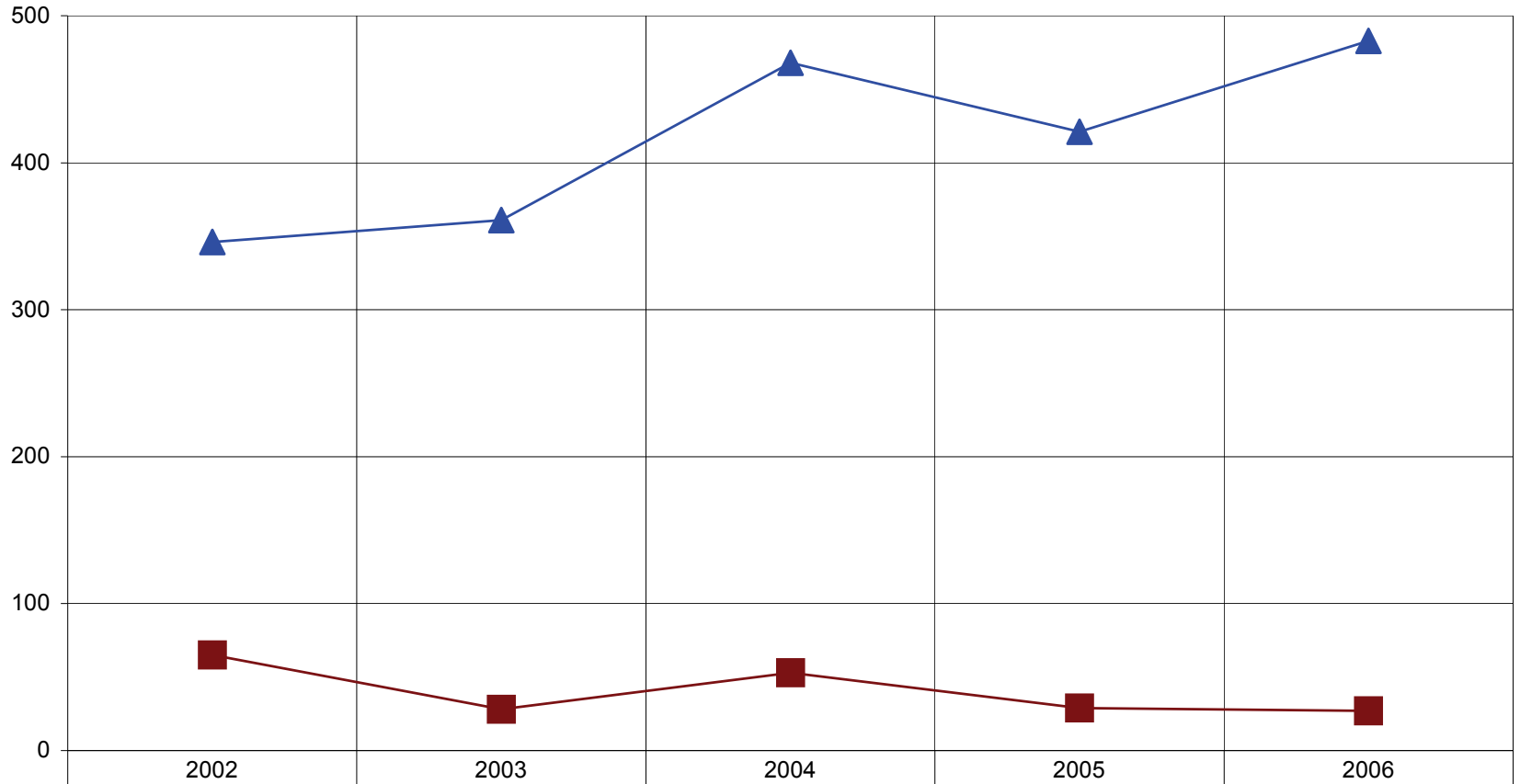
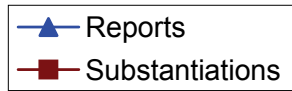
* State of Wisconsin Performance Expectation (24 Months or fewer)

Placement Stability—2006

| | 1 or 2 Placement Settings | 3 Placement Settings | 4 Placement Settings | 5 or More Placement Settings | Total (Children) |
|---|---------------------------|----------------------|----------------------|------------------------------|------------------|
| Child Protective Services (CPS) Family— | 100% (11) | 0% (0) | 0% (0) | 0% (0) | 11 |
| Child Protective Services (CPS) Family—State of | 85% | 8% | 4% | 3% | — |
| | | | | | |
| CPS Family/Juvenile Justice—Oconto County | 67% (4) | 17% (1) | 17% (1) | 0% (0) | 6 |
| CPS Family/Juvenile Justice—State of Wisconsin | 78% | 12% | 5% | 5% | — |
| | | | | | |
| Juvenile Justice—Oconto County | 56% (5) | 22% (2) | 11% (1) | 11% (1) | 9 |
| Juvenile Justice—State of Wisconsin | 80% | 10% | 5% | 5% | — |

* Child and Family Services Review National Standard (86.7% or more in 1 or 2 placement settings)

CHILD ABUSE AND NEGLECT REPORTS 2002 - 2006

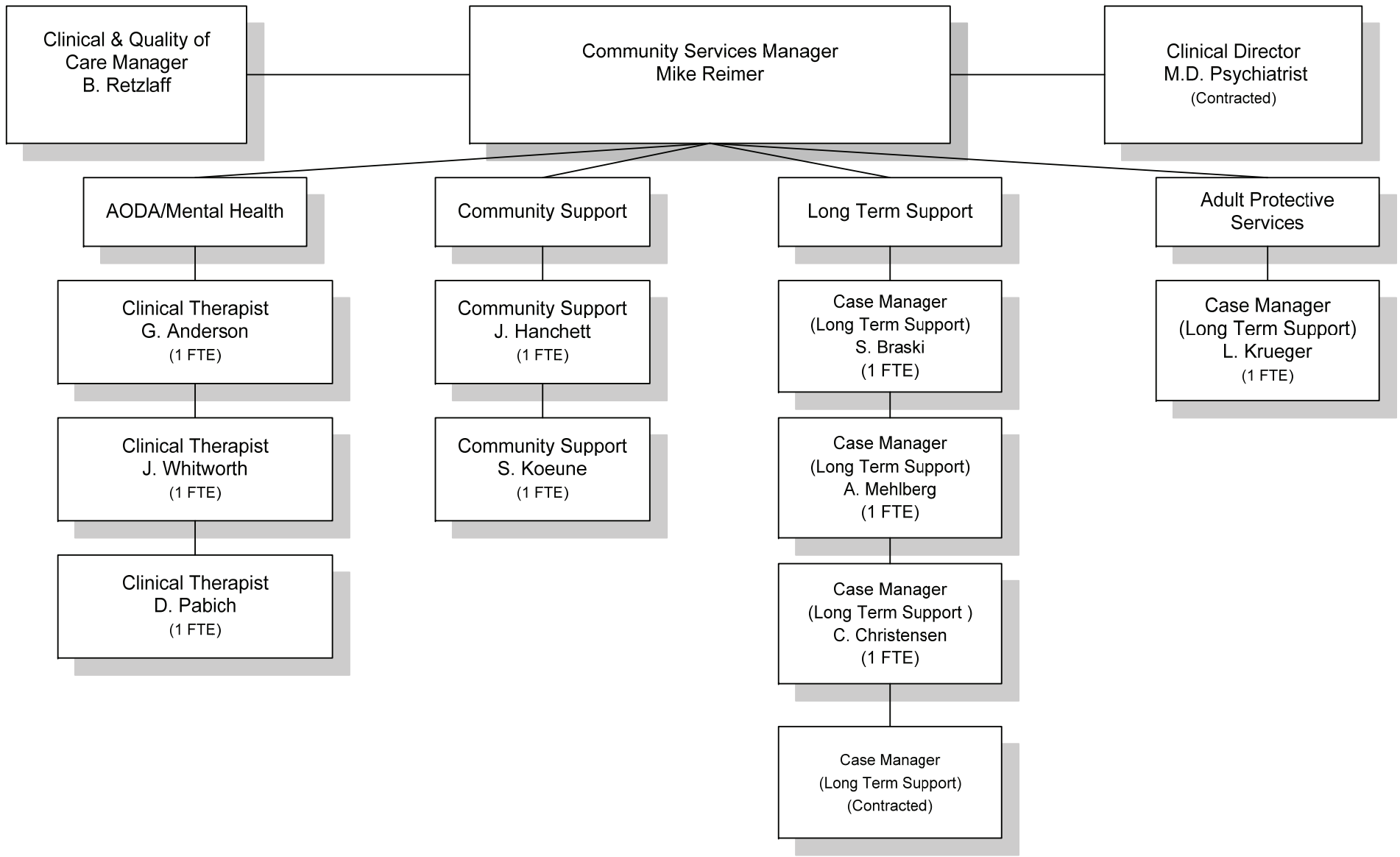


| | | | | | |
|-------------------|-----|-----|-----|-----|-----|
| ▲ Reports | 346 | 361 | 468 | 421 | 483 |
| ■ Substantiations | 65 | 28 | 53 | 29 | 27 |

2006 FAMILY SERVICES DIVISION SUMMARY

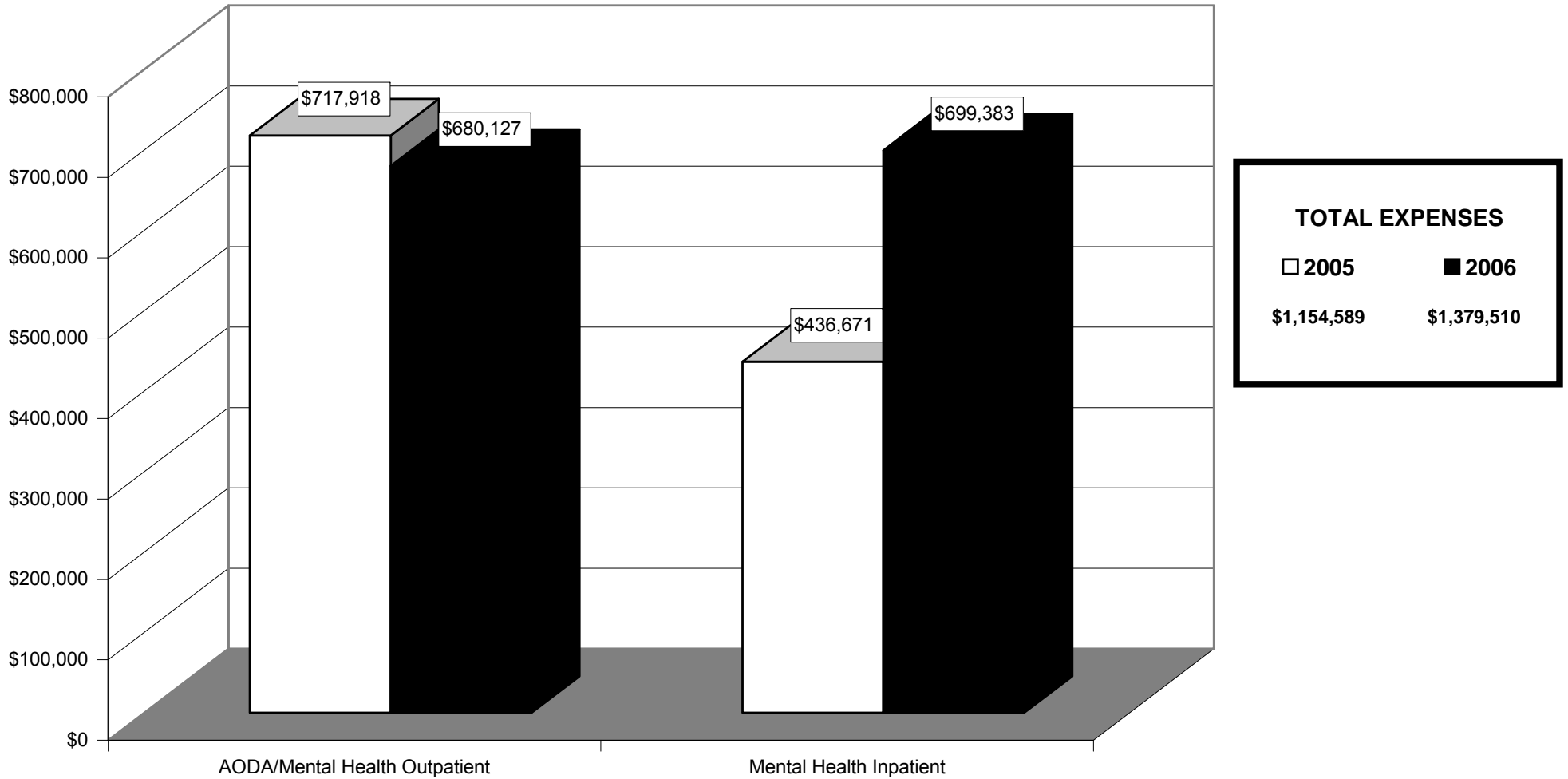
| | 2005 | 2006 |
|--------------------------------------|------|------|
| JUVENILE COURT | | |
| * Number of Referrals | 250 | 253 |
| * Counsel and Release | 62 | 81 |
| * Formal Supervision | 120 | 84 |
| * Other Dispositions | 68 | 88 |
| * Average Caseload Size | 35 | 35 |
| INTENSIVE SUPERVISION PROGRAM | | |
| * Number Served | 17 | 17 |
| * Placed Out of Home | 5 | 3 |
| KINSHIP CARE | | |
| * Number Served | 35 | 33 |
| * Waiting List | 8 | 0 |
| HOME VISITOR PROGRAM | | |
| * Number of Families | 48 | 53 |
| * Individuals Served | 151 | 179 |
| * Home Visits | 625 | 736 |

HEALTH & HUMAN SERVICES COMMUNITY SERVICES



AUTHORIZED COUNTY POSITIONS: 9
 COUNTY FTE: 9
 CONTRACTED POSITIONS: 2

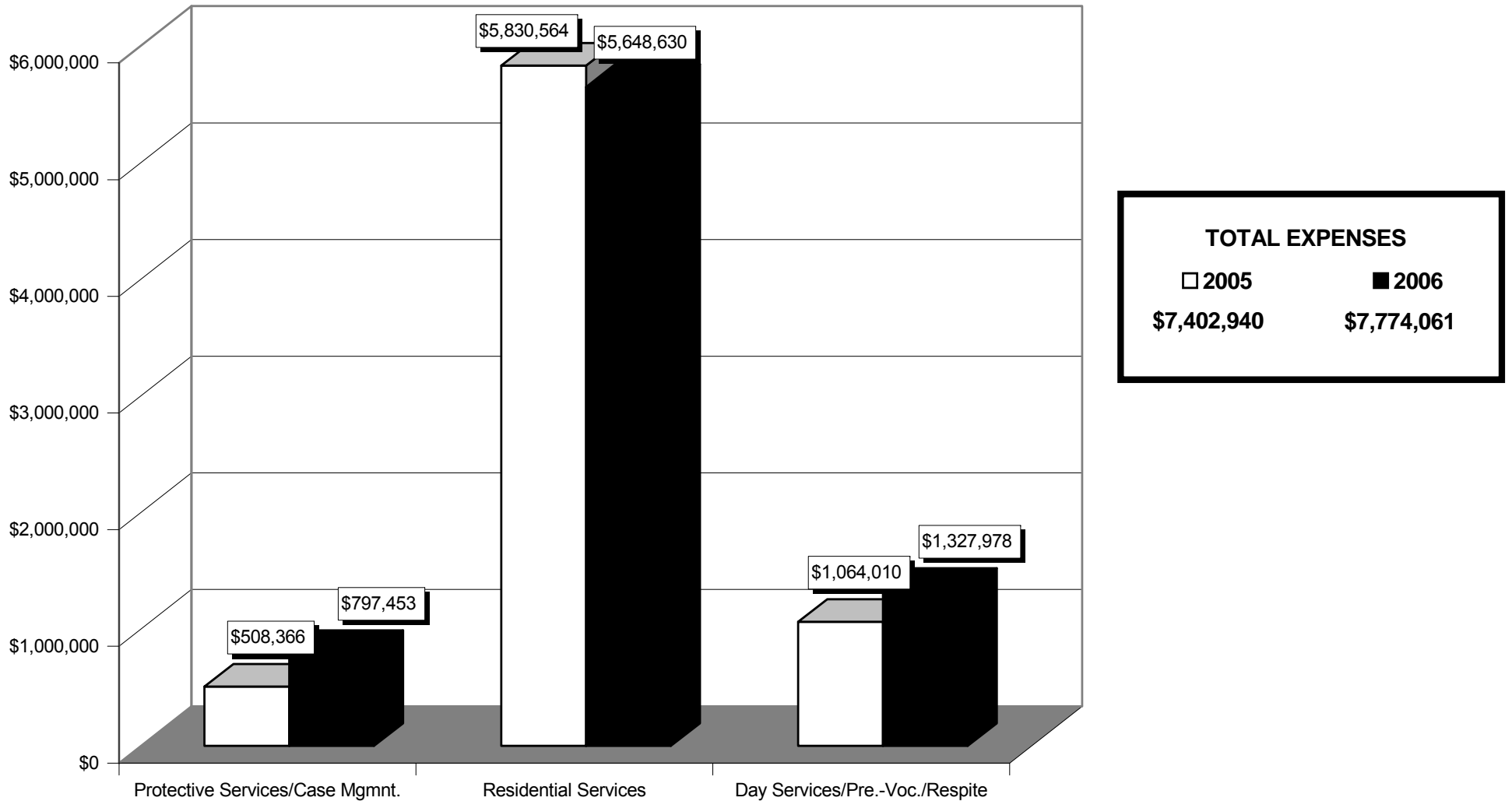
2006 FINANCIAL SUMMARY COMMUNITY CLINICAL SERVICES TOTAL EXPENSES



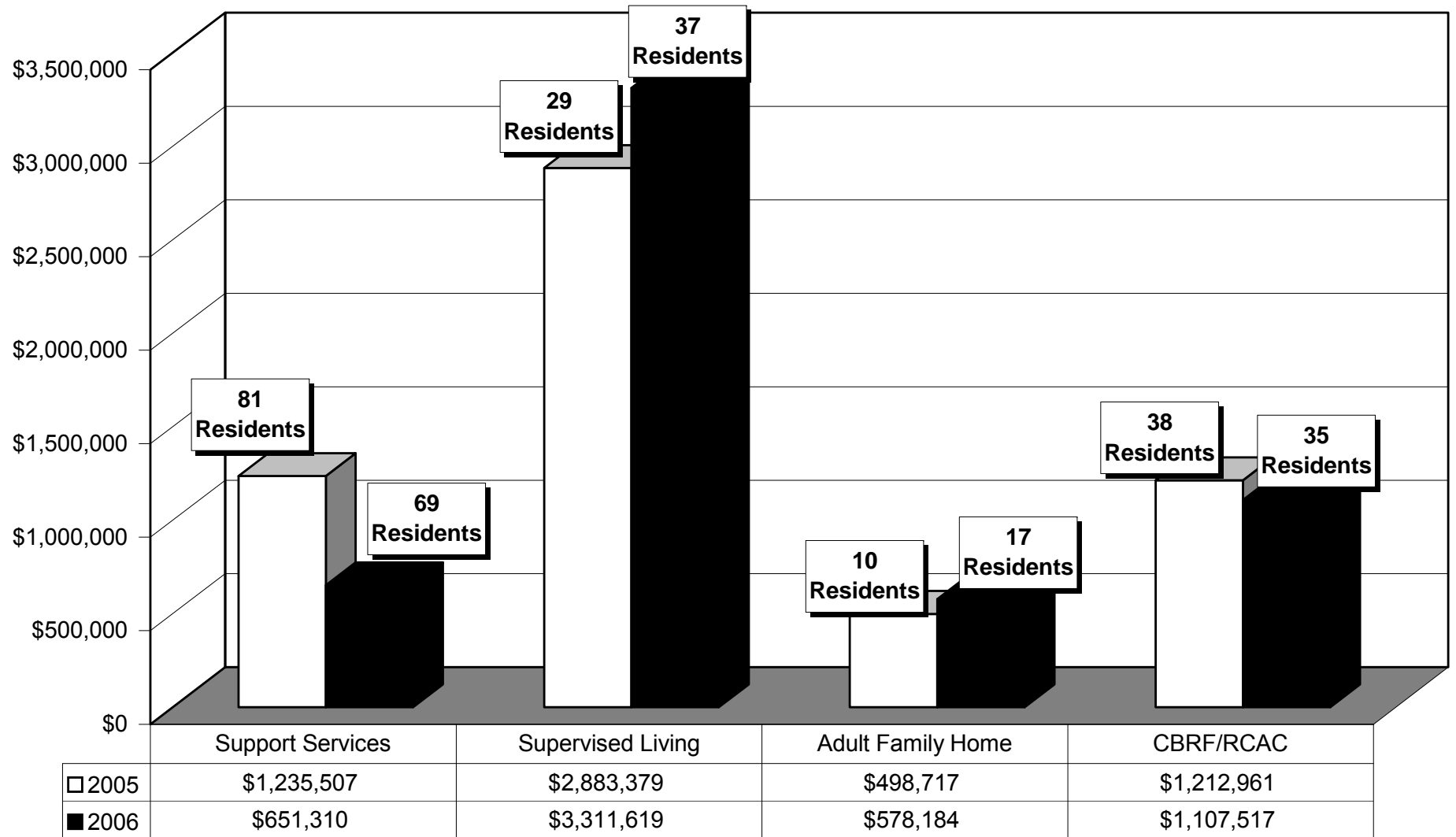
2006 FINANCIAL SUMMARY

COMMUNITY LONG TERM SUPPORT SERVICES

TOTAL EXPENSES



RESIDENTIAL SERVICES



2005 TOTAL EXPENSES - \$4,945,712

2006 TOTAL EXPENSES - \$5,830,564

2006 INPATIENT CARE

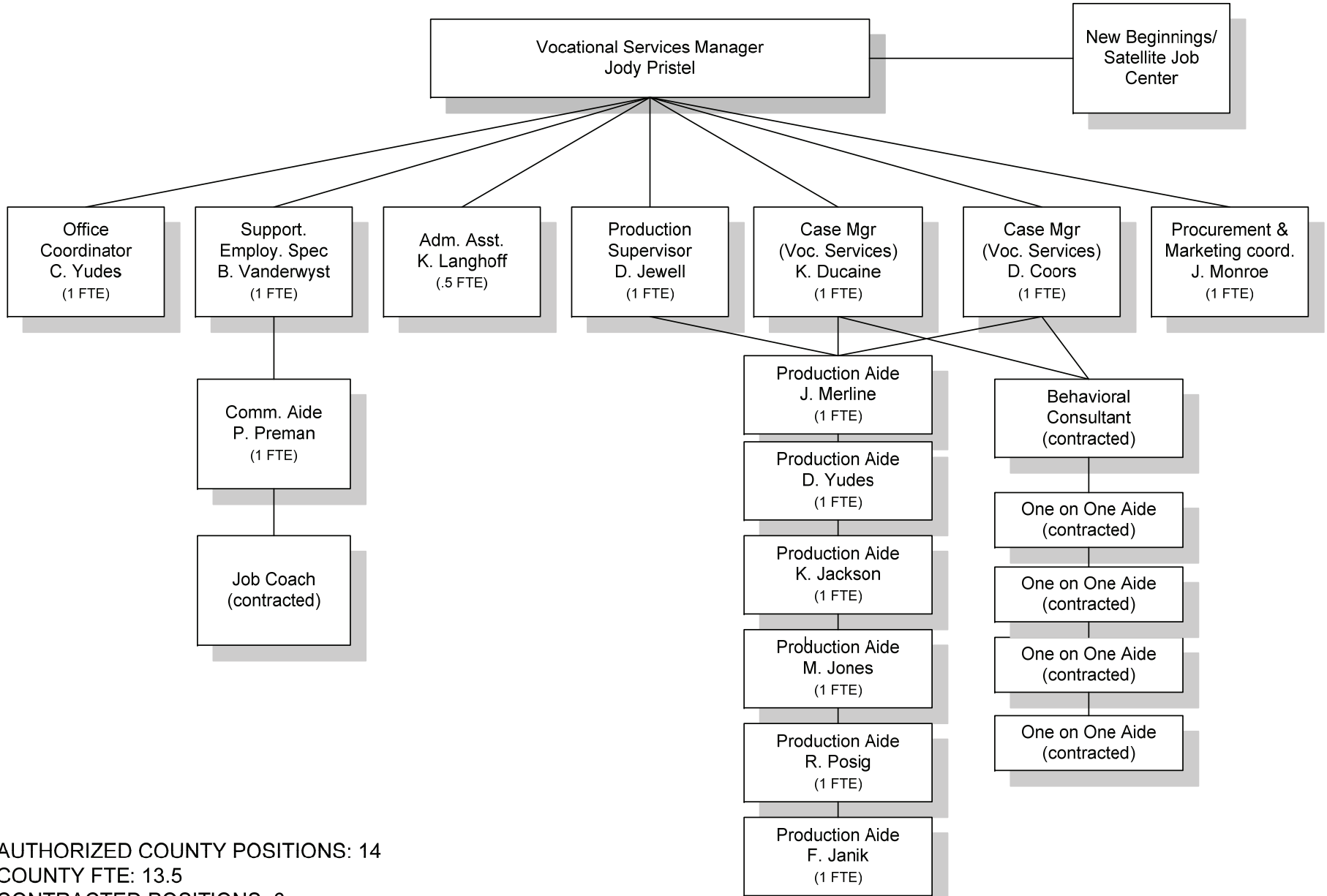
| | Number | | Average Stay | | Cost | |
|--------------------------------|--------|------|--------------|----------|-----------|-----------|
| | 2005 | 2006 | 2005 | 2006 | 2005 | 2006 |
| Mental Health Short Term * | 64 | 71 | 4 days | 6 days | \$132,800 | \$249,298 |
| Mental Health Long Term | 3 | 6 | 152 days | 112 days | \$303,871 | \$450,085 |
| Total | 67 | 77 | | | \$436,671 | \$699,383 |
| | | | | | | |
| Alcohol and Other Drugs (AODA) | 25 | 14 | 21 days | 21 days | \$63,291 | \$36,129 |

* Short term inpatient - under 30 days

2006 COMMUNITY SERVICES DIVISION SUMMARY

| | 2005 | 2006 |
|---|------|------|
| OUTPATIENT CLINIC | | |
| * Number of Clients | 413 | 489 |
| OWI (Operating While Intoxicated) | | |
| * Number of Assessments | 196 | 187 |
| AODA INTENSIVE OUTPATIENT | | |
| * Number of County Paid Clients | 2 | 15 |
| FAMILY COURT MEDIATION | | |
| * Number of Referrals | 36 | 25 |
| * Sessions (excluding orientation) | 43 | 30 |
| COMMUNITY OPTIONS PROGRAM AND MEDICAID WAIVER FUNDING | | |
| <ul style="list-style-type: none"> * Funded services for 158 elderly and individuals with disabilities * Average cost was \$135 per day * Private pay nursing home cost is \$178 per day | | |

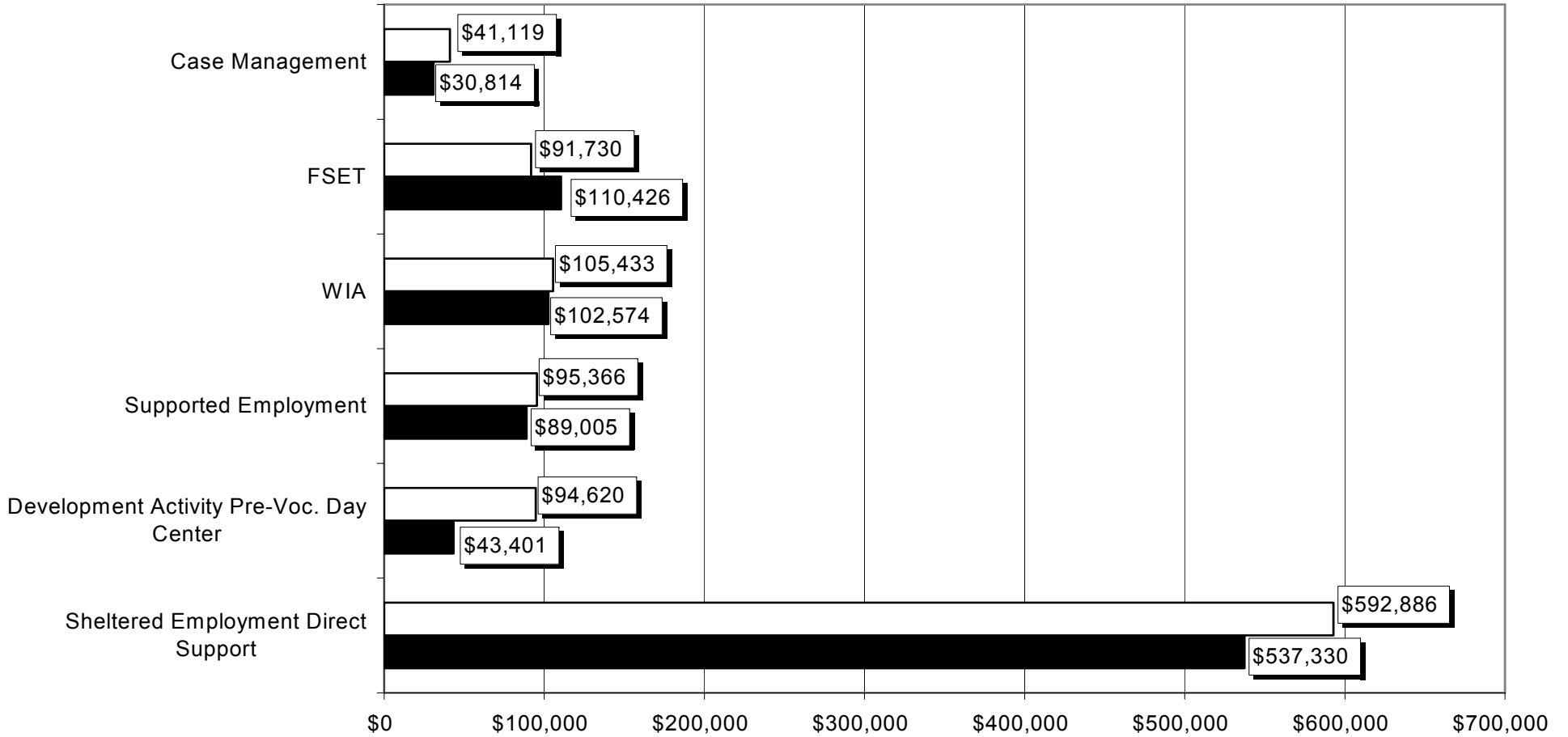
HEALTH & HUMAN SERVICES VOCATIONAL SERVICES



AUTHORIZED COUNTY POSITIONS: 14
 COUNTY FTE: 13.5
 CONTRACTED POSITIONS: 6

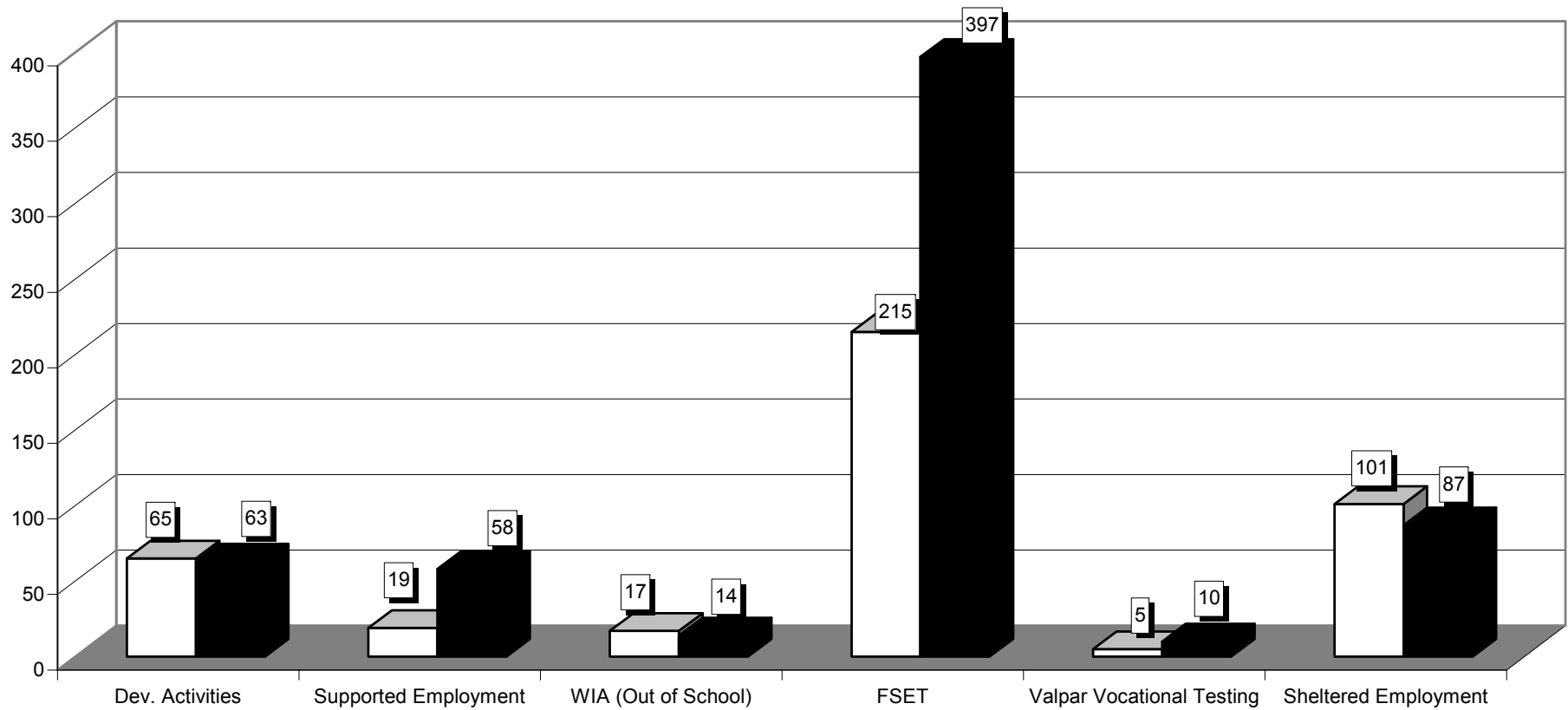
**2006 FINANCIAL SUMMARY
 VOCATIONAL SERVICES DIVISION
 TOTAL EXPENSES**

| TOTAL EXPENSES | |
|----------------|-----------|
| 2005 | 2006 |
| \$1,021,154 | \$913,550 |



NEW VIEW INDUSTRIES TRANSITIONAL PROGRAMMING CLIENT PARTICIPATION

| Unduplicated Client Count | |
|---------------------------|------|
| 2005 | 2006 |
| 331 | 351 |



2006 VOCATIONAL SERVICES DIVISION SUMMARY

DEVELOPMENT ACTIVITIES PROGRAM

- * 1st annual craft fair held at New View
- * Making of rag rugs
- * Implemented treatment groups
- * Developed sign language classes
- * Developed dental hygiene program

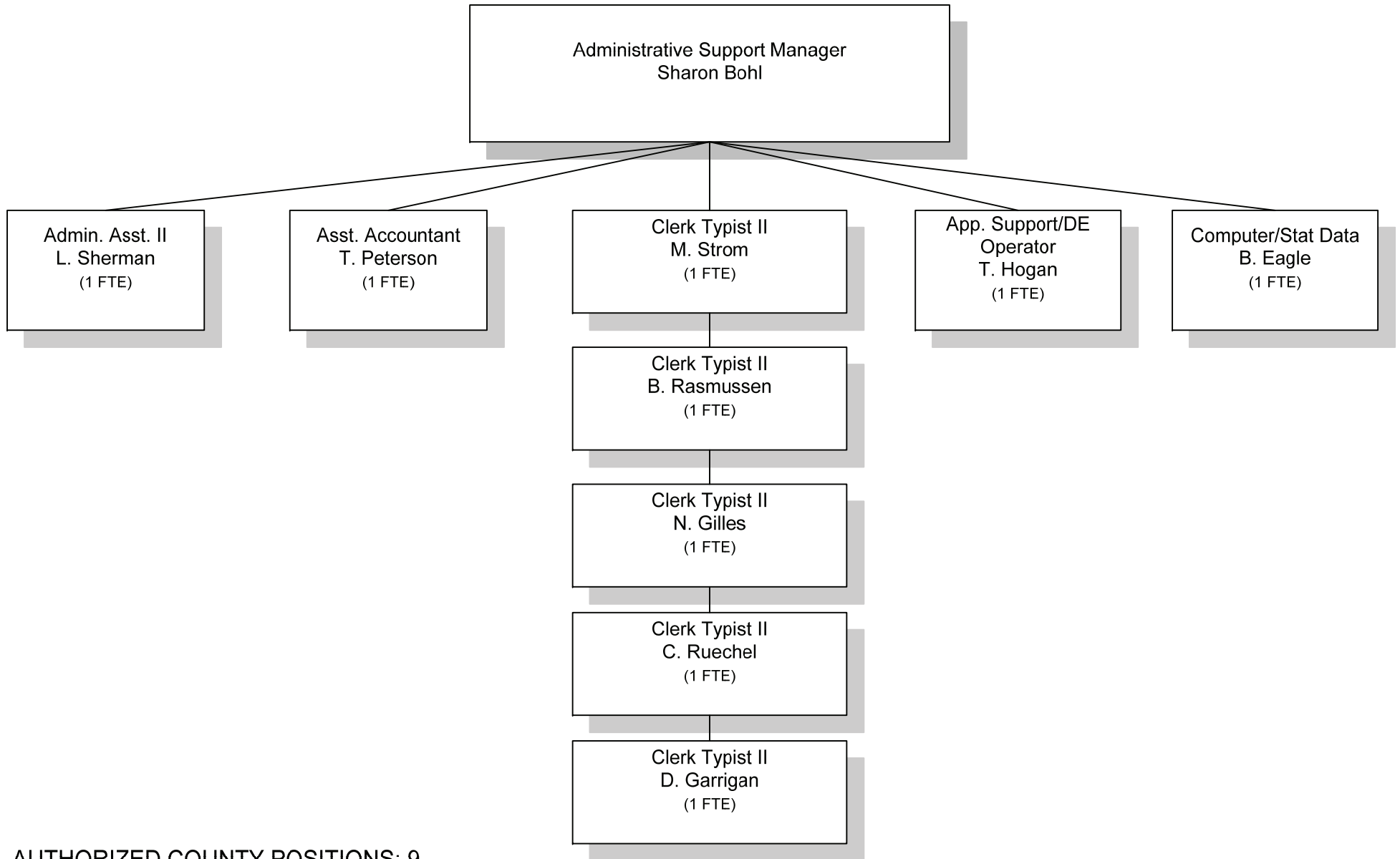
SHELTERED EMPLOYMENT

- * Subcontracted with 21 businesses
- * Ventured into partnerships with 5 new companies
- * Manufacturing of wooden furniture (toddler rockers & gliders)
- * Purchased commercial stove for kitchen with fundraising funds.

SUPPORTED EMPLOYMENT

- * 19 Division of Vocational Rehabilitation participants placed in jobs in the community
- * 7 WIA out of school youth participants placed in jobs in the community
- * 112 FSET participants gained employment
- * Successfully completed first year of grant awarded from DVR to provide Supported Employment Services to the chronically mentally ill.
- * Continued to provide benefits analysis to clients

HEALTH & HUMAN SERVICES ADMINISTRATIVE SUPPORT



AUTHORIZED COUNTY POSITIONS: 9
COUNTY FTE: 9
CONTRACTED POSITIONS: 0

2006 FINANCIAL SUMMARY ADMINISTRATIVE SUPPORT DIVISION TOTAL EXPENSES

