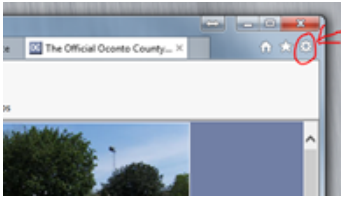
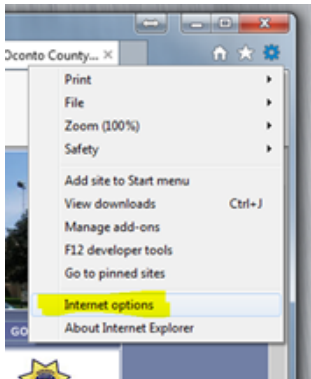


If you're having issues accessing the Oconto County GIS Mapping site (SOLO) this may be a cache issue, to clear your cache follow these instructions:

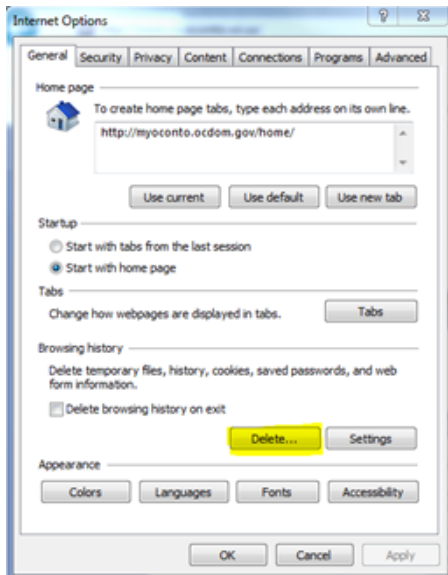
1. To clear your cache (in Internet Explorer 10), close any GIS application tabs/windows and then click the gear button in the top right of the browser window.



2. Choose Internet Options from the dropdown list.



3. This should open a dialog similar to the one below. Choose the Delete button.



4. Make sure the checkboxes look like the ones below. Then click Delete.

