

Tract# 03-10

Advertised # S-3

Contract # 181-10

Contractor Marshal Giese

Cut all mixed hardwood , fir, aspen and spruce

Leave all cedar, oak, and white pine uncut.

Winter logging conditions required

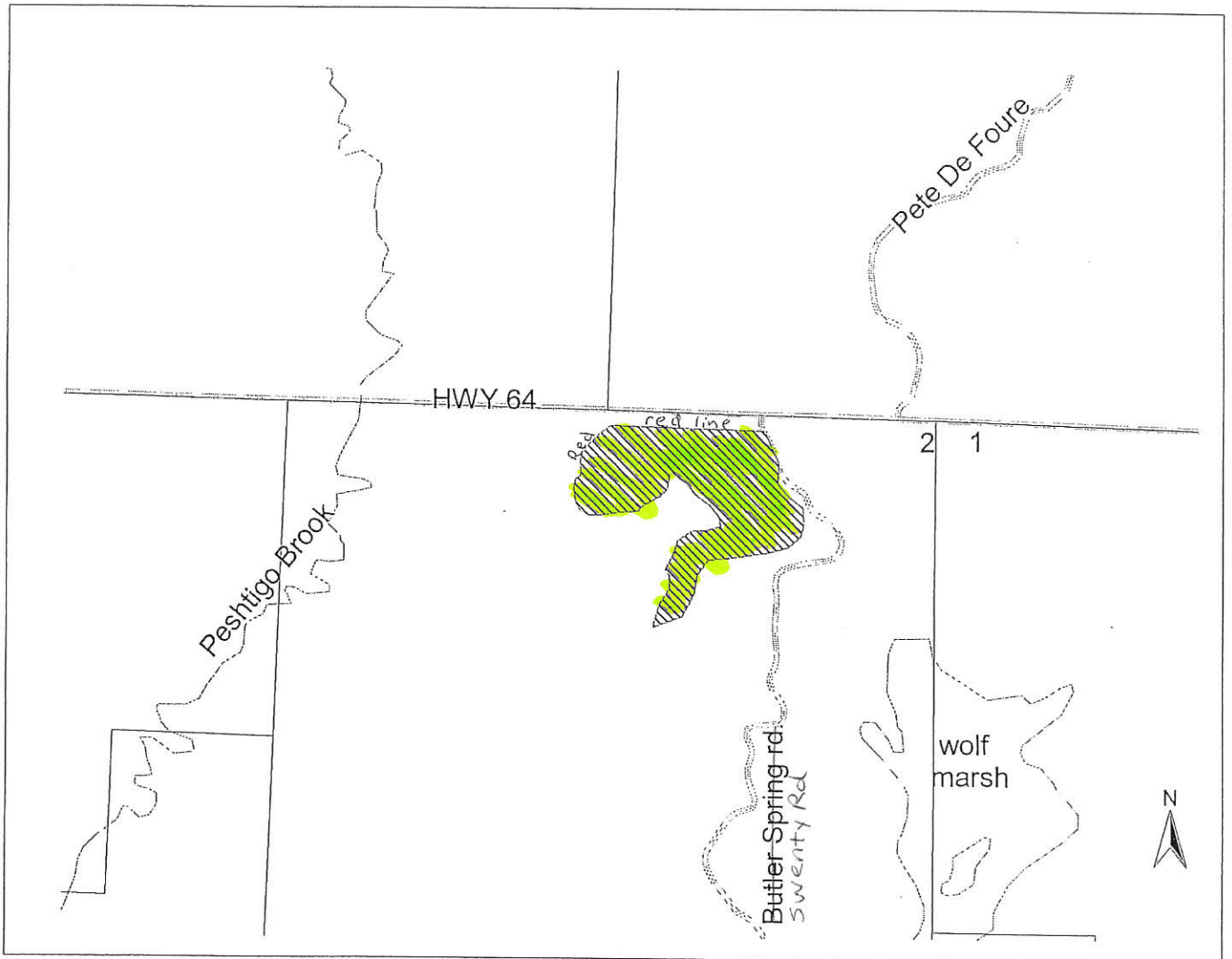
Acres 29

Mixed hardwood.....450 cord

Balsam Fir.....45 cord

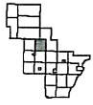
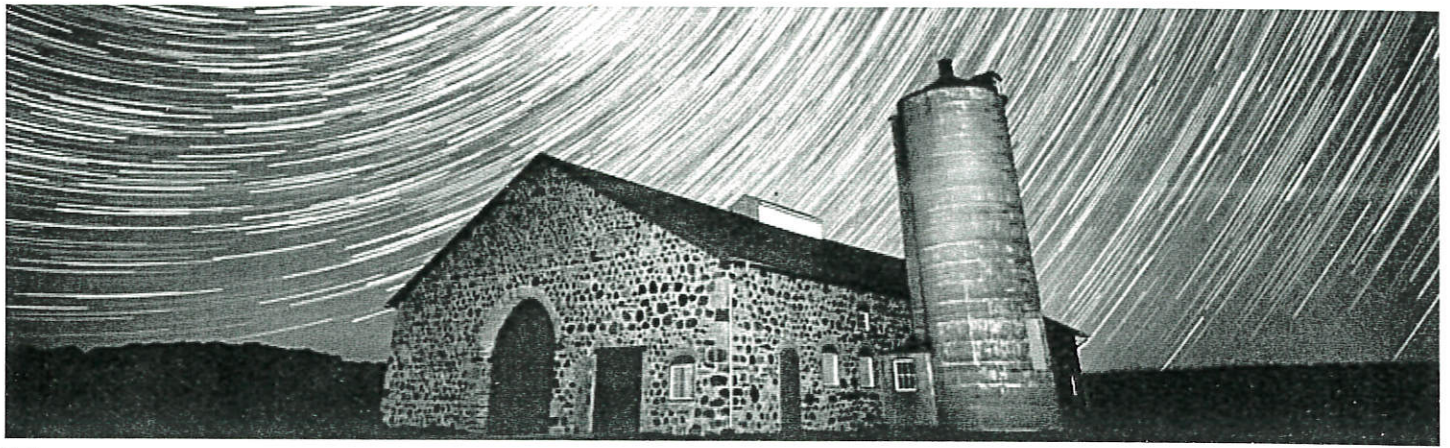
Aspen..... 20 cord

Spruce.....15 cord



Bagley
T.30N.-R.18E. Section 2

4" = 1 Mile



Bagley

Township 30N - Range 18E

Copyright © 2018 Mapping Solutions

See Aerial Map Page 95

